

Code: 9A01605

B.Tech III Year II Semester (R09) Supplementary Examinations December/January 2014/2015  
**ESTIMATION, COSTING & VALUATION**  
 (Civil Engineering)

Time: 3 hours

Max Marks: 70

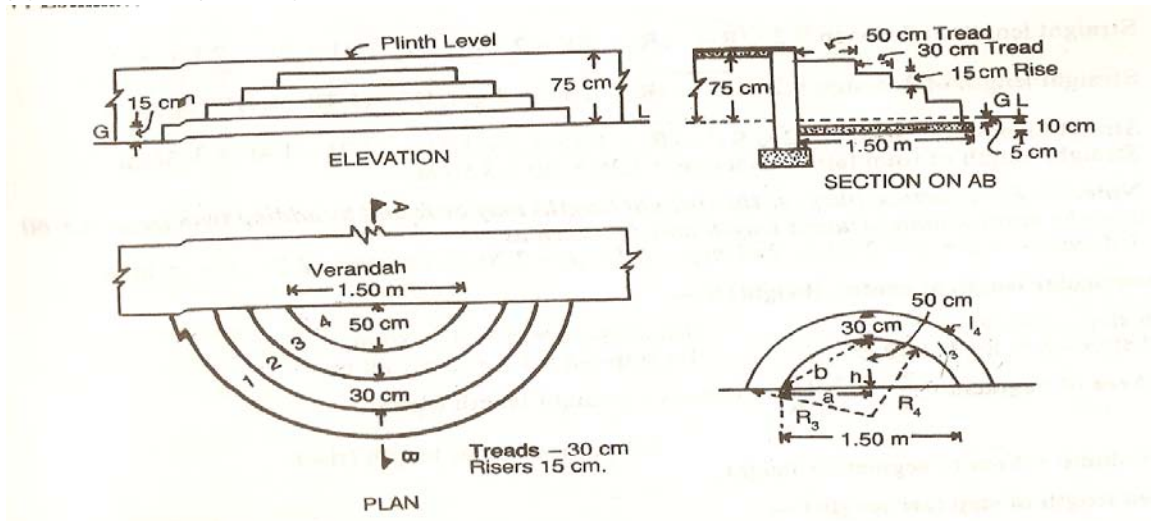
Answer any FIVE questions

All questions carry equal marks

Standard scheduled of rates is permitted in the examination hall

\*\*\*\*\*

1. What are the general requirements for installation? Explain the specifications for drainage board and wash basin installations.
2. Work out the quantities for the following items for figure shown below.  
 (a) Earthwork excavation.  
 (b) Cement concrete in foundation.  
 (c) Brick work.  
 (d) 2.5 cm CC (1:1.5:3) in surface finish.

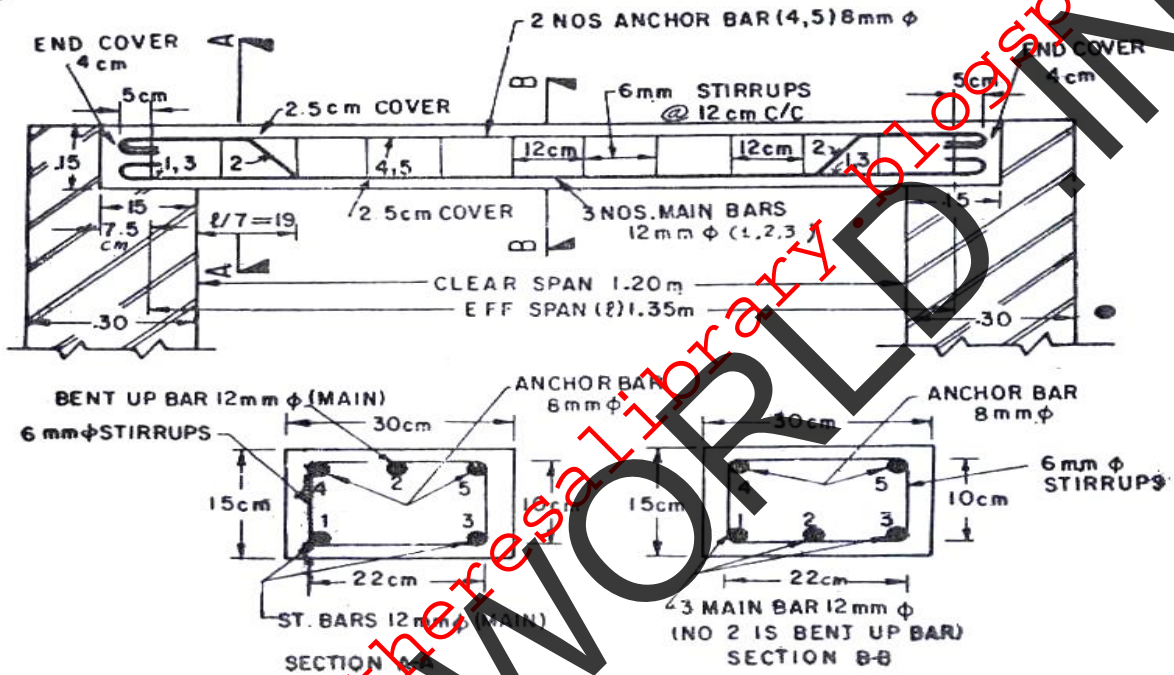


3. Estimate the quantity of earth work for an embankment, 120 m long, 8m wide at crest and whose side slopes is 2 to 1. The central height from 0 to at every 30 m intervals are 0.60 m, 1.2 m, 1.6 m, 2.0 m and 1.3 m. Calculate the earth work using mid section formula and trapezoidal formula.
4. What are the five subheads in rate analysis? Explain them clearly.

Contd. in page 2

Code: 9A01605

- 5 Work out the quantity of steel in a R.C.C lintel over a door opening from the given drawing. Also prepare the bar bending schedule.



- 6 (a) Why it is recommended to use standard forms of contract? What are the matters to be defined in the conditions of contract? Elaborate.  
 (b) What are the contents of a tender document? Enumerate the complete tendering procedure with illustrations.
- 7 (a) Differentiate between the following:  
 (i) Salvage value and scrap value. (ii) Free hold and lease hold properties.  
 (b) A property is let out a monthly rent of Rs. 1,500/-. If the out goings is taken at 30% of gross annual rent, and if the owner of the property expects a return of 12%, what is the capitalized value of the property?
- 8 Write detailed specifications for stone masonry, doors and windows.

\*\*\*\*\*